



Tilana RealCDP Web and Mobile Access Installation

Server installation instructions for
Tilana RealCDP™ Web Connector and Tilana WebClient™

June 2008

We bring true value to cloud storage, by providing continuous data protection, permanent archival, web & mobile access, version history, and multi-computer synchronization on one balanced, quickly deployed, versatile, and extensible online CDP data protection and synchronization platform.

Storage systems built on the Tilana Cloud platform provide end users the best kind of data protection, with true real time CDP (continuous data protection), automated multi-computer content synchronization, and secure remote archive, with unlimited version history that enables instant any-point-in-time content recovery from PCs, Web browsers, and mobile devices.

Copyright © 2006, 2007, 2008 Tilana Systems Corporation
All rights reserved. The names Tilana™, Tilana Cloud™, Tilana Reserve™, PayOnce™, and Personal Digital Archive™, as well as their associated pine cone logos and the name, are all trademarks of Tilana Systems Corporation. The words "Cure for the Common Backup™" and "Protection, Access, Synchronization, Anytime, Anywhere, Always™," when used together and in sequence, and whether used in whole or in part, are also trademarks of Tilana Systems Corporation. All other trademarks are the property of their respective owners.

Overview

The Web and Mobile access components of the Tilana RealCDP system are provided by two components.

1. Tilana RealCDP Web Connector provides a SOAP Web Service API for integration with the Tilana RealCDP server software.
2. Tilana WebClient is an ASP.NET application which provides web-based access to a Tilana RealCDP account. Tilana WebClient communicates with the Tilana RealCDP server software using the Tilana RealCDP Web Connector.

For scalability, multiple instances of both the Web Connector and WebClient may be hosted on any number of computers, as required by the anticipated load the system will need to meet. This document covers the simplest installation, where a single instance of the Web Connector and a single instance of the WebClient are installed on the same computer. This computer may be the same computer running the Tilana RealCDP server software, or a different computer.

Prerequisites

Before beginning installation of the Tilana RealCDP Web and Mobile access components, you must have the following:

1. A functional Tilana RealCDP server software installation
2. A computer running Windows server with Internet Information Services v6.0 and ASP.NET v2.0 installed.

Summary of Installation Steps

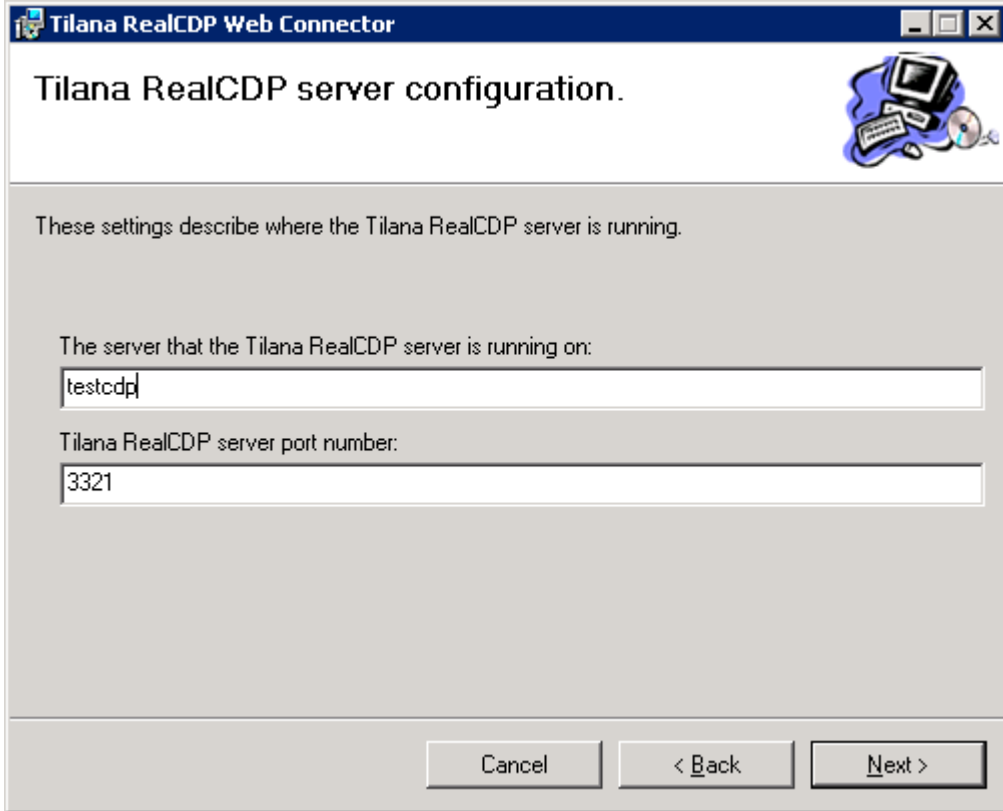
1. Install the Tilana RealCDP Web Connector
2. Add TLDataService.dll as an allowed Web Service Extension
3. Install Tilana WebClient
4. Verify that the ASP.NET v2.0 Web Service Extension is Allowed

1. Install the Tilana RealCDP Web Connector

To begin installation of the Tilana RealCDP Web Connector, double click on the Tilana RealCDP Web Connector installer. The “Tilana RealCDP Web Connector Setup Wizard” will appear.

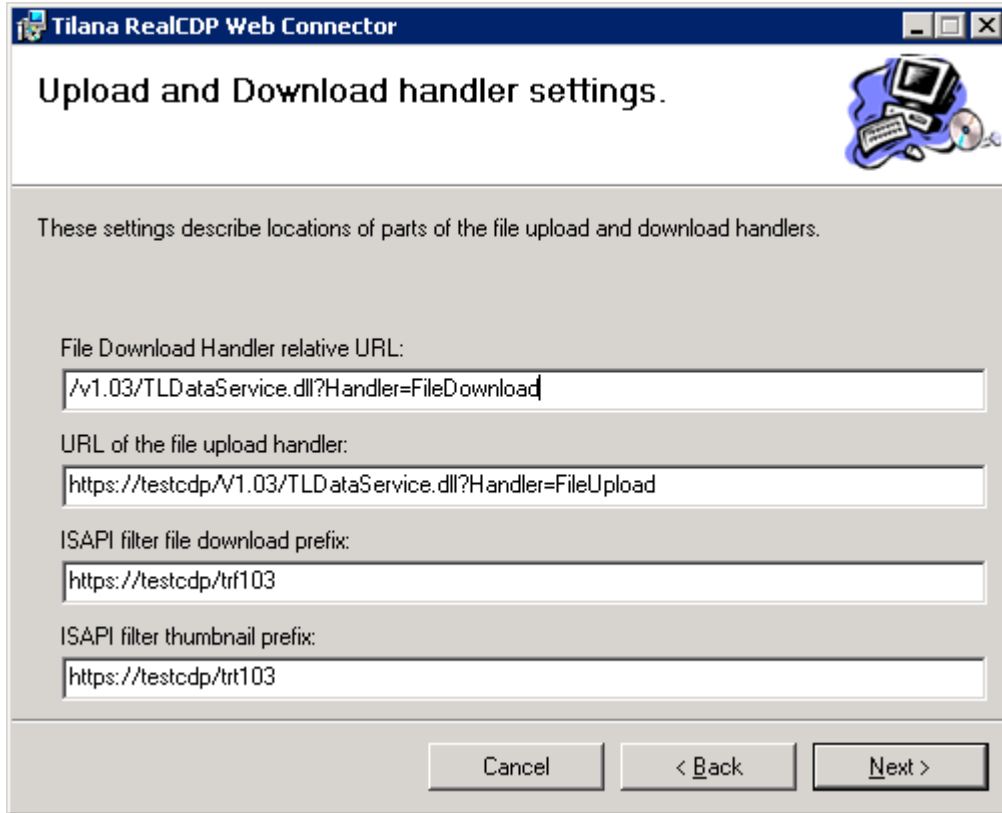


Press “Next”, and the “Tilana RealCDP server configuration” screen will appear.



The settings on this screen control the connection between the RealCDP Web Connector and your previously installed RealCDP server software. If you are installing the RealCDP Web Connector on the same computer as the RealCDP server software, you may enter "localhost" for the server name. The default port of 3321 should be left unchanged.

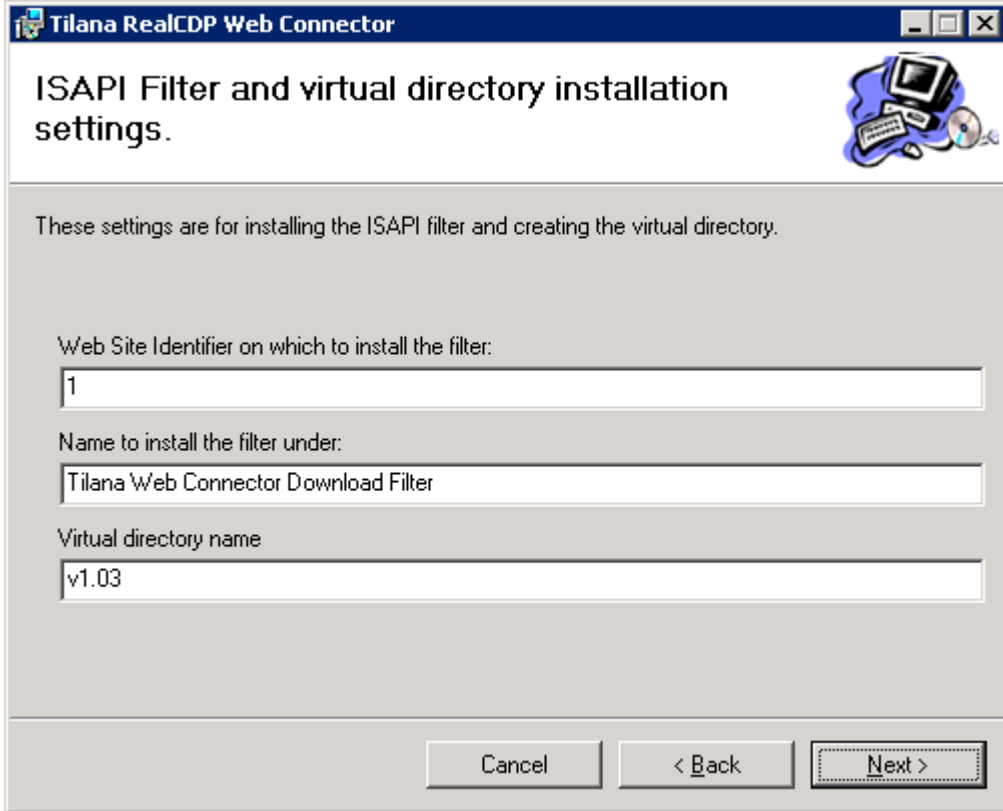
After configuring the server settings, press "Next". The "Upload and Download handler settings" screen will appear.



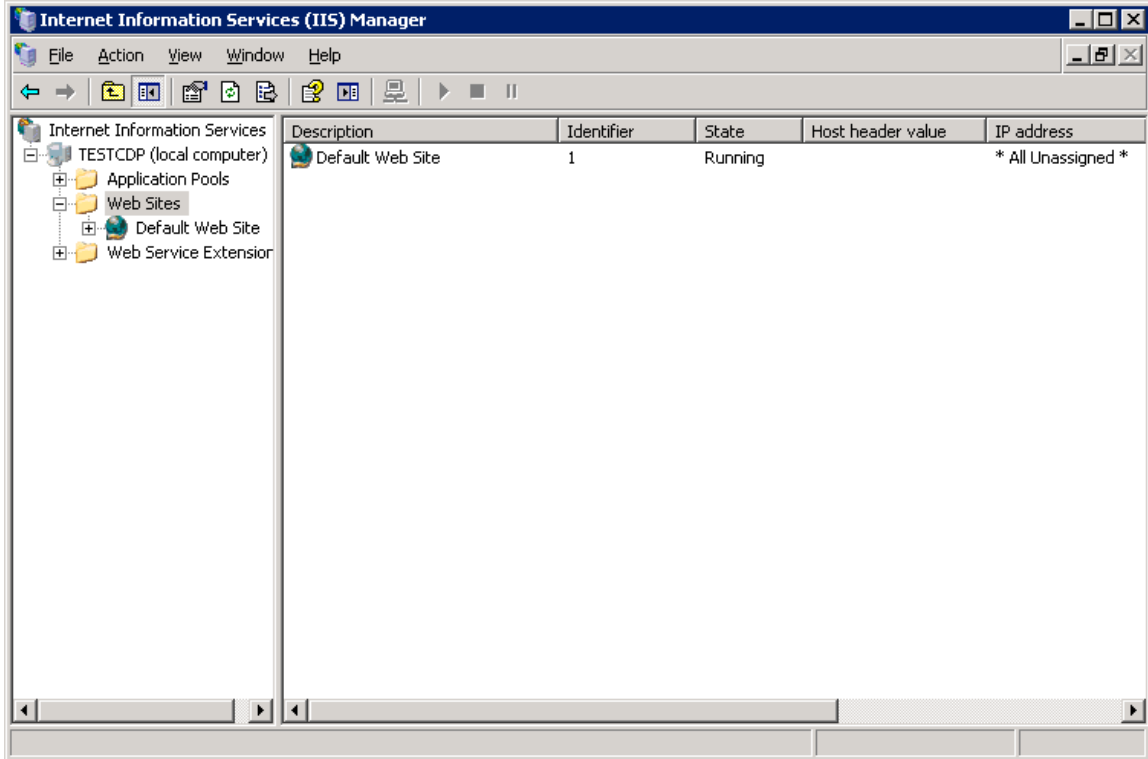
The settings on this screen control the mechanisms used for file upload and download from web browsers and the virtual URLs used for thumbnail download. You must manually verify the following:

1. Verify that the server name in the “URL of the file upload handler”, “ISAPI filter file download prefix”, and “ISAPI filter thumbnail prefix” is correct, and replace it if necessary. The server name used should connect to the computer on which the Tilana RealCDP Web Connector is being installed, and access the Web Site selected in the next step.
2. If you are installing in a test environment and do not have an SSL certificate for your web server, change “https” to “http” in the “URL of the file upload handler”, “ISAPI filter file download prefix”, and “ISAPI filter thumbnail prefix” settings.

After verifying that the upload and download handler settings are correct, press “Next”. The “ISAPI Filter and virtual directory installation settings” screen will appear.



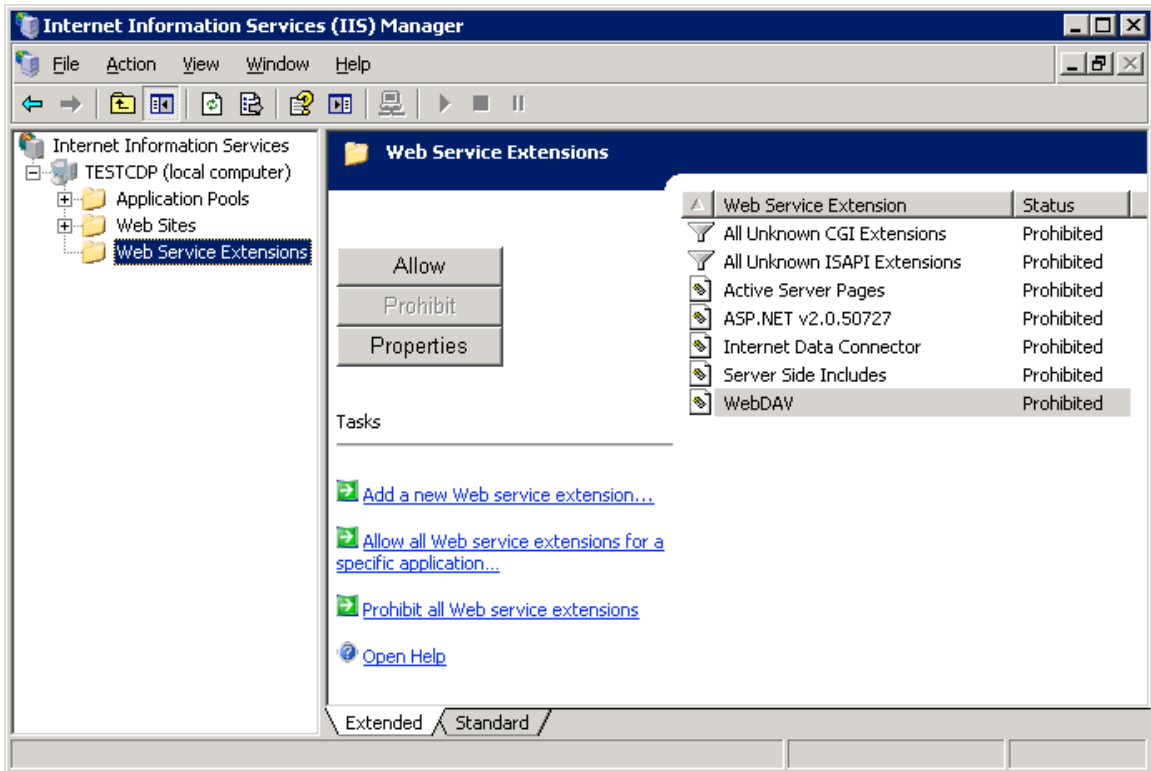
The settings on this screen determine the Web Site within your IIS installation into which the control the installation of the Tilana RealCDP Web Connector will be made. The “Web Site Identifier” may be determined by clicking on “Web Sites” within the Internet Information Services (IIS) Manager applet, which can be accessed under “Administrative Tools” in the Control Panel. The Web Site Identifier for each Web Site in your IIS configuration will be listed under the column “Identifier” in the right pane. If you are installing under the Default Web Site, the identifier will always be 1.



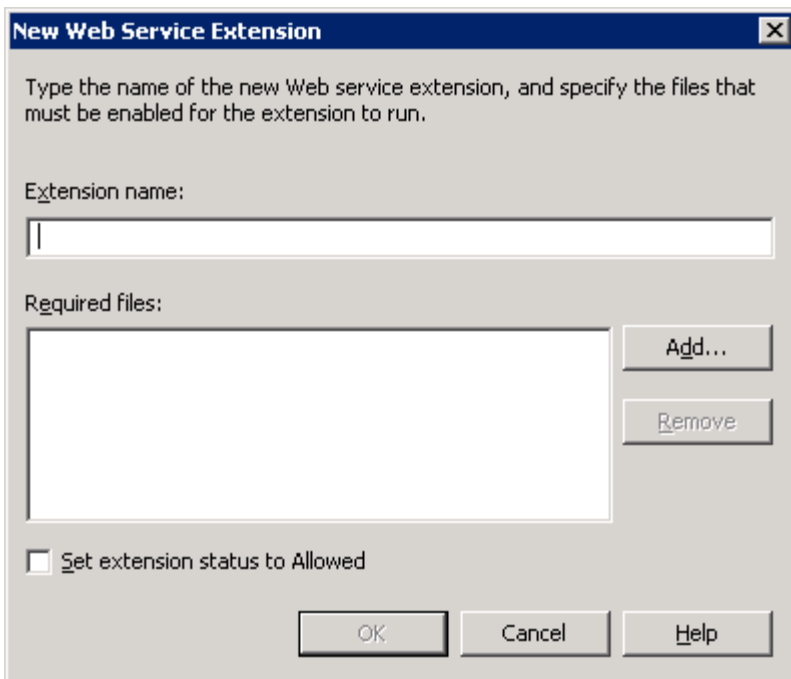
The default values for the “Name to install the filter under” and “Virtual directory name” settings should not need to be modified for most installations. After verifying that you have entered the correct Web Site identifier, press “Next” to select an installation folder and complete the installation.

2. Add TLDataService.dll as an allowed Web Service Extension

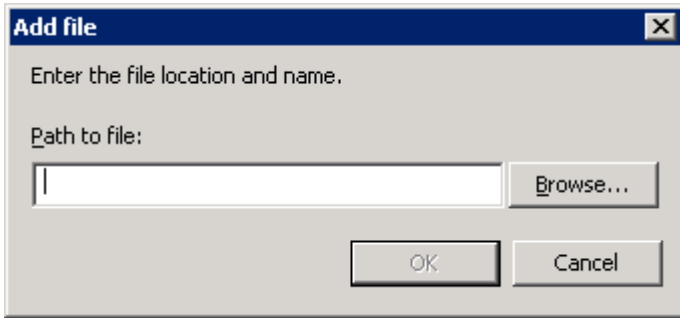
In order for IIS to allow the Tilana RealCDP Web Connector to be executed, you must register the newly installed *TLDataService.dll* file as an allowed Web Service Extension. To do so, click on “Web Service Extensions” within the Internet Information Services (IIS) Manager applet, which can be accessed under “Administrative Tools” in the Control Panel.



Click on “Add a new Web service extension...” The “New Web Service Extension” screen will appear.

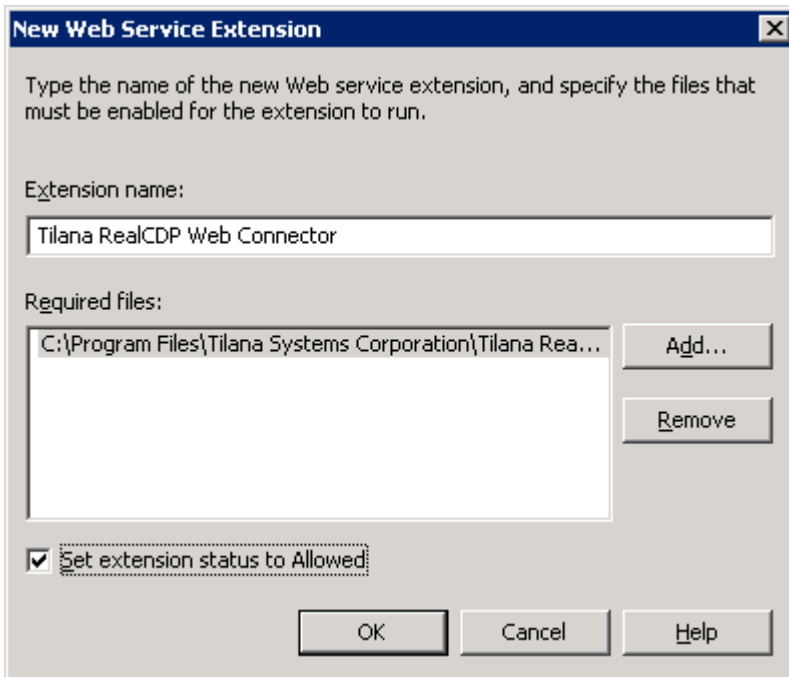


Under “Extension name”, type “Tilana RealCDP Web Connector”, and then press the “Add...” button. The “Add file” screen will appear.

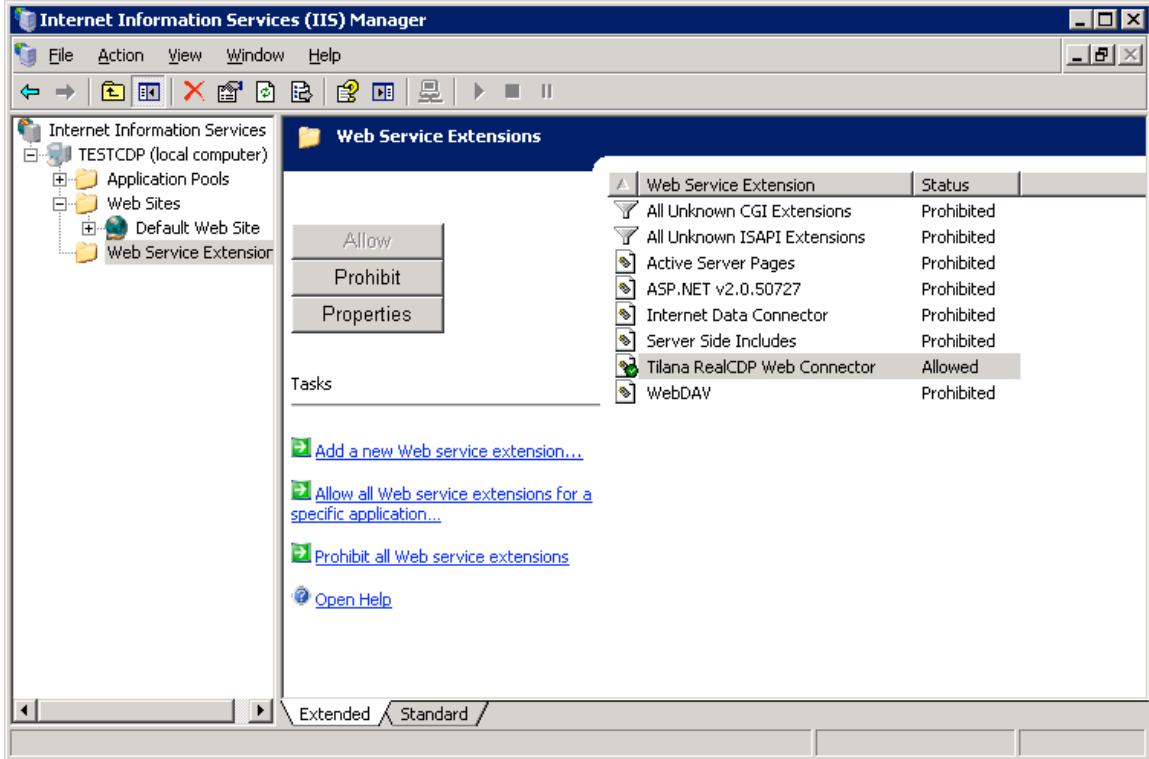


Press the “Browse...” button and select the newly installed TLDataService.dll. The default installation location is C:\Program Files\Tilana Systems Corporation\Tilana RealCDP Web Connector\v1.03\WebService\TLDataService.dll. After selecting the file, press “OK” to dismiss the “Add file” screen and return to the “New Web Service Extension” screen.

Check the box “Set extension status to Allowed”, and press “OK” to add the new Web Service Extension.

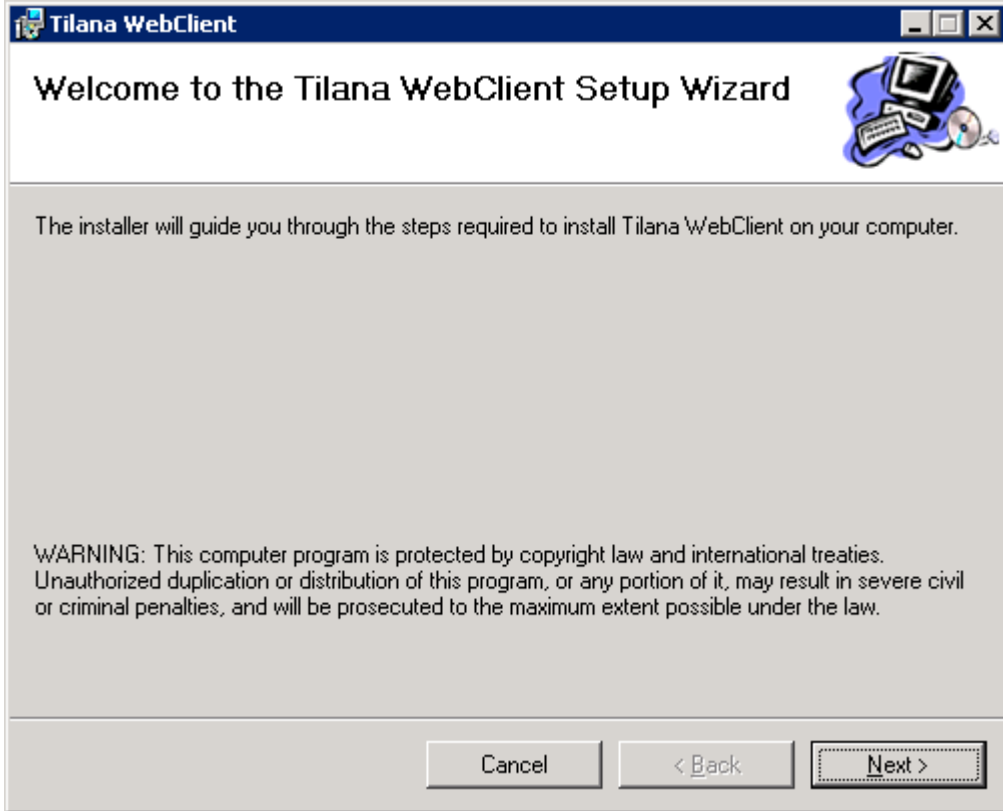


After adding the Web Service Extension, it should appear in the right pane of the Internet Information Services (IIS) Manager, with its status shown as “Allowed”.

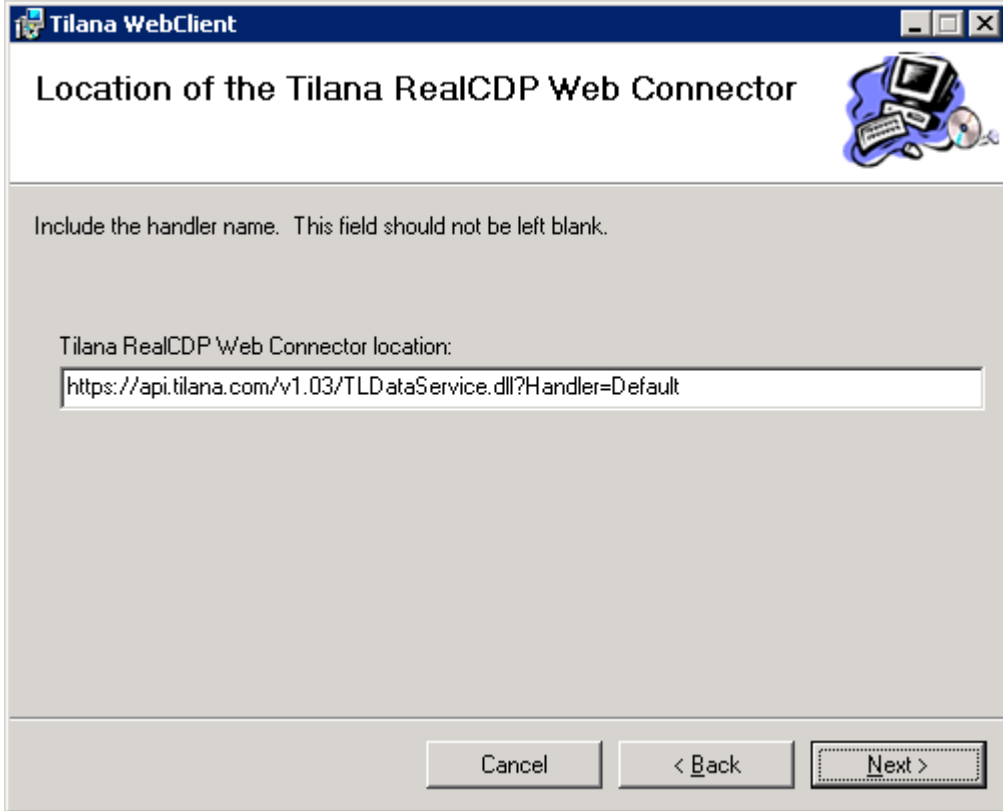


3. Install Tilana WebClient

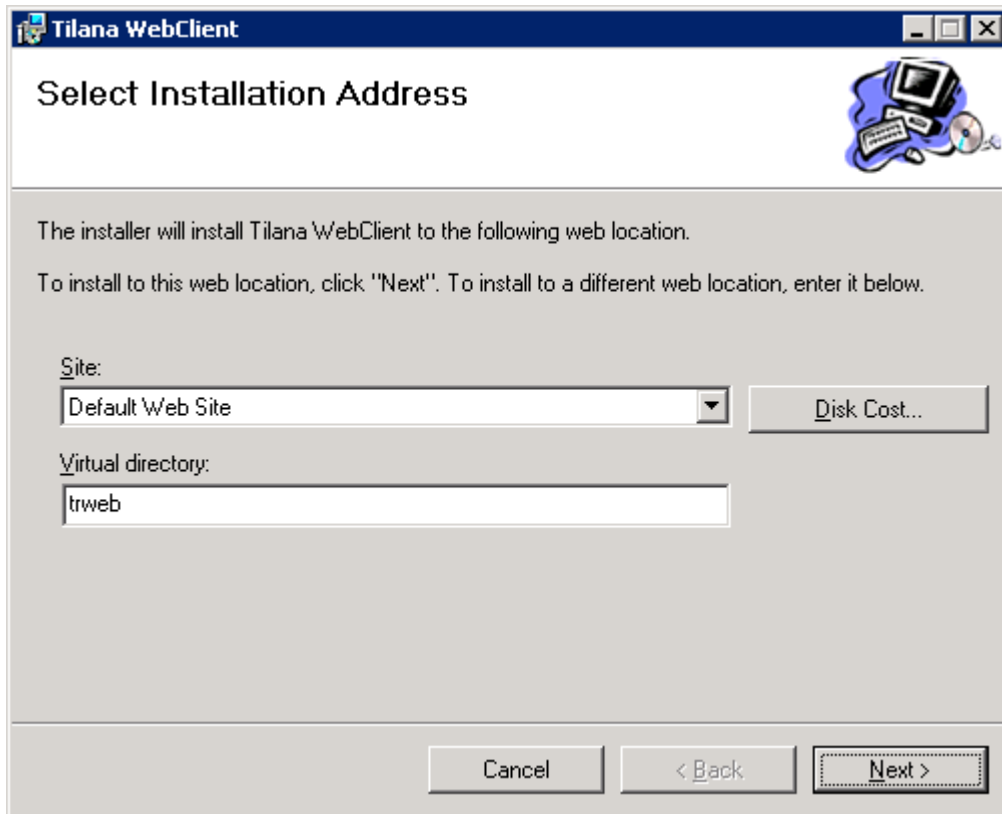
To begin installation of Tilana WebClient, double click on the Tilana WebClient installer. The "Tilana WebClient Setup Wizard" will appear.



Press "Next", and the "Location of the Tilana RealCDP Web Connector" screen will appear.



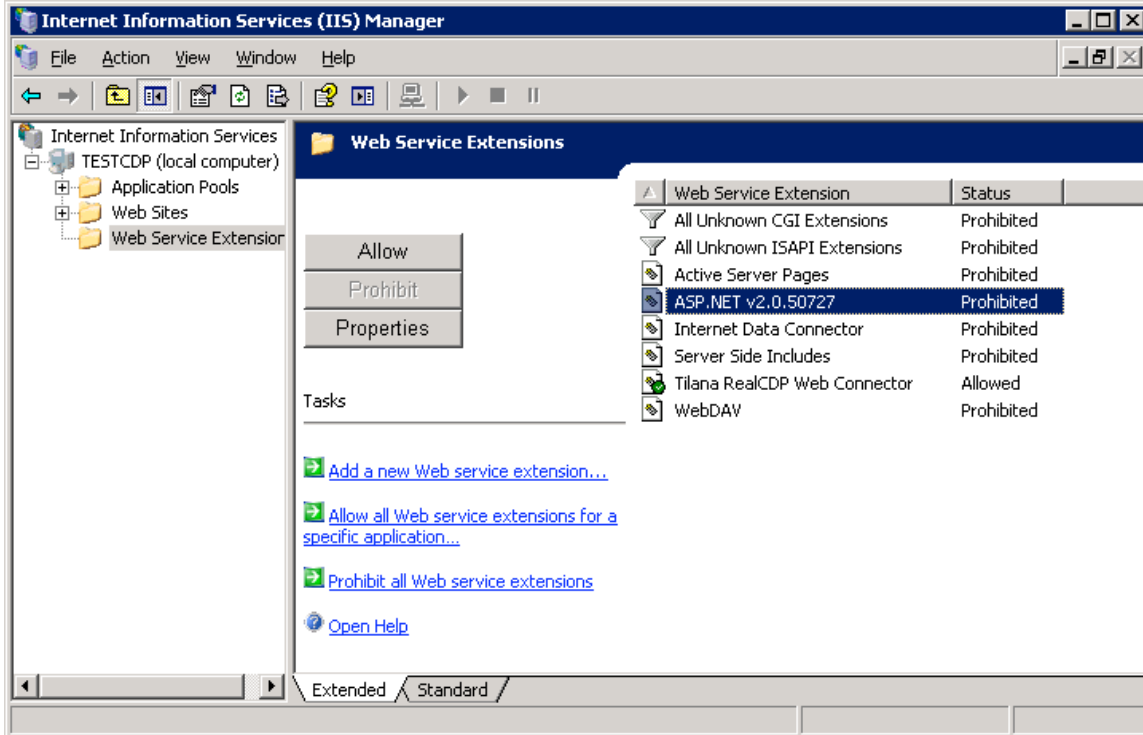
The "Tilana RealCDP Web Connector location" setting should be customized for your installation. In most instances, it is sufficient to merely change the server name ("api.tilana.com" above) to the name of the server on which you installed the Tilana RealCDP Web Connector in step 1. If you are installing in a test environment without an SSL certificate, "https" should also be changed to "http". After verifying that the "Tilana RealCDP Web Connector location" is correct, press "Next". The "Select Installation Address" screen will appear.



The settings on this screen control the Web Site within your IIS installation in which Tilana WebClient will be installed, and the virtual directory that will be created under that Web Site. Select the desired Web Site using the “Site” drop-down list. Most installations will use the default “Virtual directory” setting of “trweb”. After verifying that the settings are correct, press “Next” and complete the installation.

4. Verify that the ASP.NET v2.0 Web Service Extension is Allowed

Before the Tilana WebClient software will function, the ASP.NET v2.0 Web Service Extension must be set to “allowed” in your IIS configuration. To verify that ASP.NET v2.0 is allowed, click on “Web Service Extensions” within the Internet Information Services (IIS) Manager applet, which can be accessed under “Administrative Tools” in the Control Panel.



If the ASP.NET v2.0 Web Service Extension is listed as “Prohibited”, highlight it and press the “Allow” button. The ASP.NET v2.0 Web Service Extension should now appear as follows:

